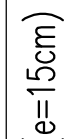
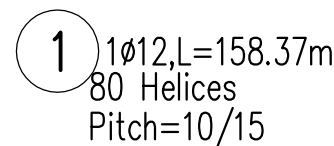


M. 1:50



50cm pilota se odbije

2 1ø12, L=148.71m
75 Helices
Pitch=10/15/10

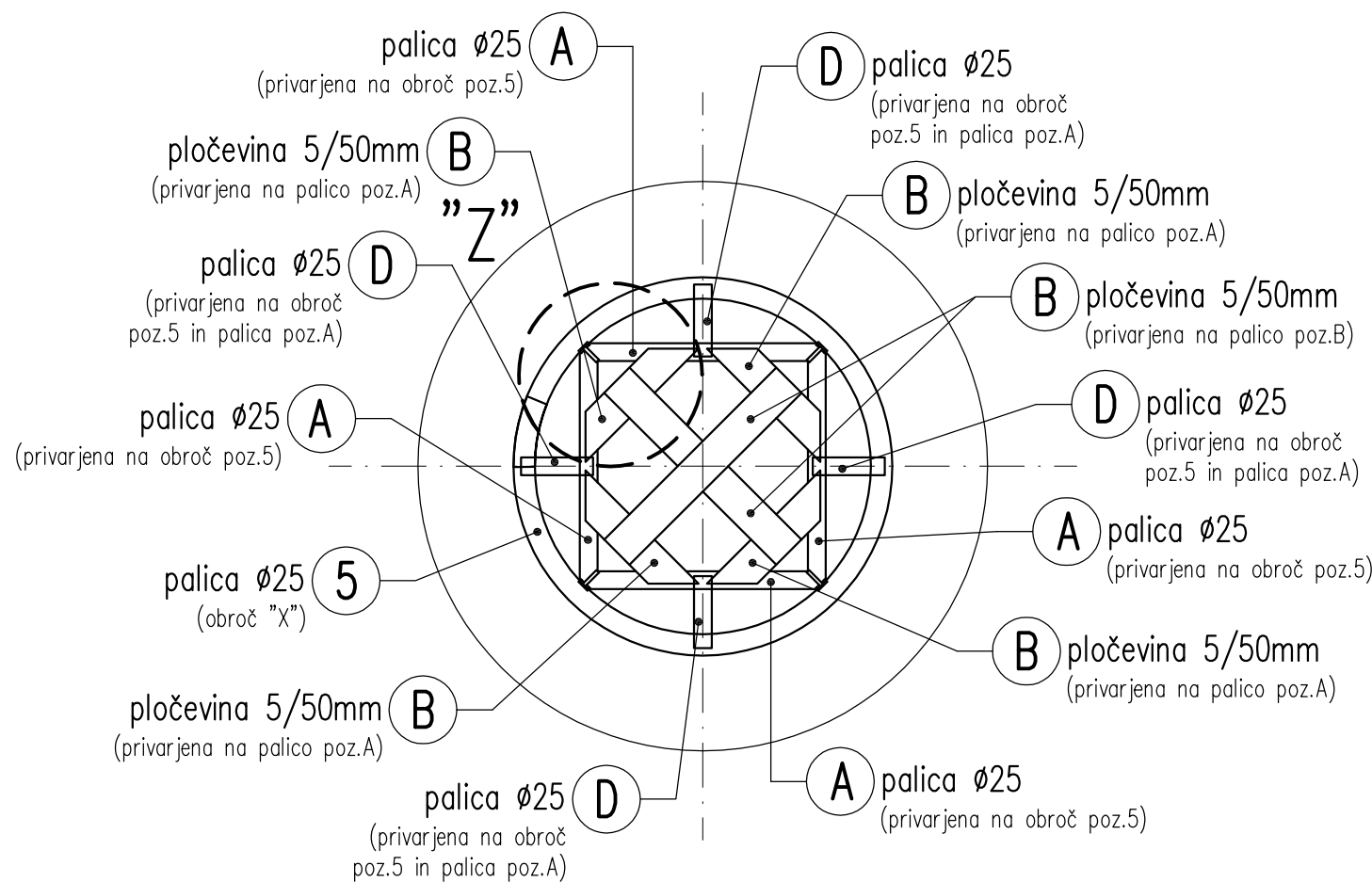


M. 1:25



poz.	material	kg	kom	skupaj kg
5	ø25 - GA, l=1810mm	upoštevano v izvlečku armature		

M. 1:10

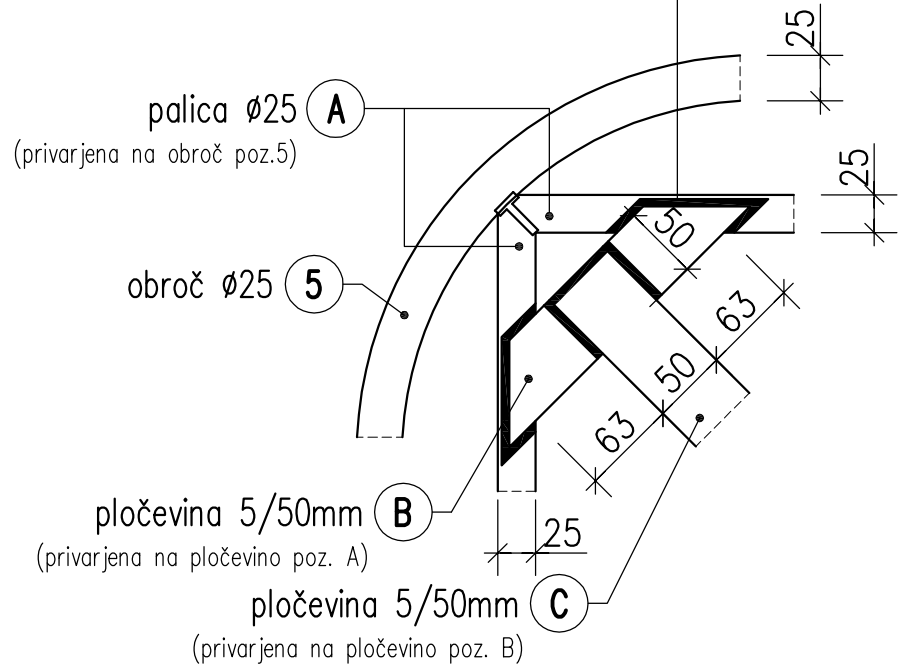


MATERIAL ZA OBROČ "Y"

poz.	material	kg	kom	skupaj kg
5	Ø25 – GA, l=1810mm	upoštevano v izteku armature		
A	Ø25 – GA, l=360mm	1,39	4	5,56
B	ploščato železo 5/50, l=225mm	0,44	4	1,76
C	ploščato železo 5/50, l=350mm	0,68	2	1,36
D	Ø25 – GA, l=100mm	0,39	4	1,56
skupaj kg za 1 kom. :		10,24		
skupaj kg za 15 kom.:		153,60		

M. 1:5

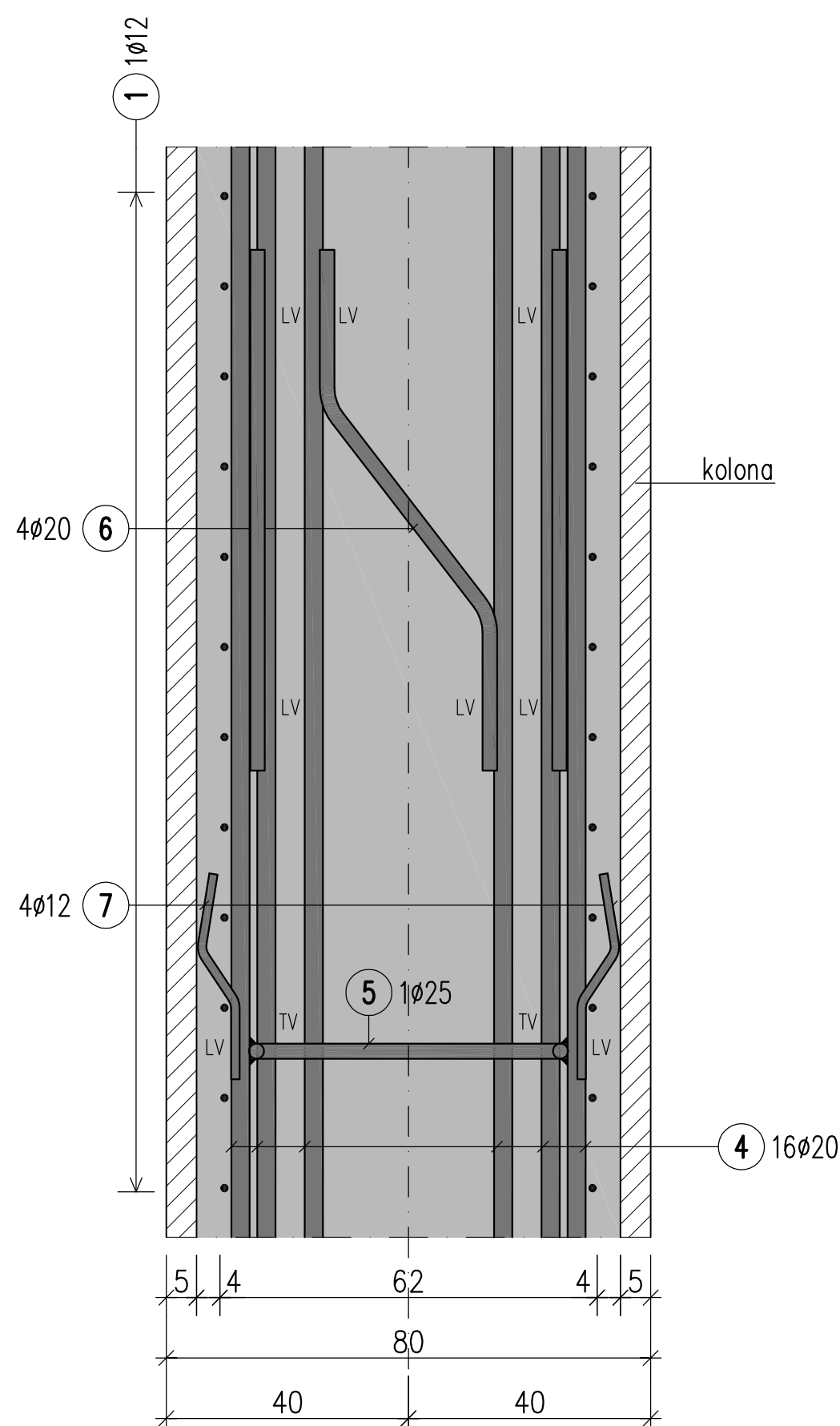
palica $\varnothing 25$
(privarjena na obroč poz.5)



M. 1:10



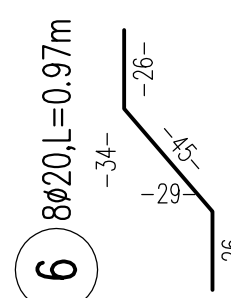
DETAJL VARENJA poz. 6 in 7 M. 1:10



Vzdolžne palice na katere sta privarjeni palici poz. 6 in 7, morajo biti privarjene na nosilni obroč koša pilota poz. 5 (obroč "X")

LV – linijski var
TV – točkovni var

7 40 ϕ 12,L=0.37m



Poz.	Kom	f1	Dolžina	D12	D20	D25
1	1	12	158.37	158.37		
2	1	12	149.71	148.71		
3	16	20	12.00		192.00	
4	16	20	9.45		151.20	
5	11	25	1.81			19.91
6	8	20	0.97		7.76	
7	40	12	0.37	14.80		
Skupna dolžina			321.88		350.96	19.91
kg / m			D12 0.911	D20 2.530		D25 3.951
kg / profil			293.233	887.929		78.664
Skupna teža (kg)			1259.826			
Konadov			15	18897.390		

[illegible][illegible]
$$h/w = 59.4 / 90.0 \text{ (0.54m}^2\text{)}$$

THIS DOCUMENT MUST BE TREATED AS CONFIDENTIAL. IT MUST NOT BE COPIED, DISTRIBUTED TO OTHERS, OR ITS CONTENTS BE USED OR COMMUNICATED, EITHER IN WHOLE OR IN PART, WITHOUT WRITTEN PERMISSION. ALL RIGHTS ARE RESERVED BY THE UNITED STATES GOVERNMENT.